



# Cerulean Arts

GALLERY · STUDIO

FALL 2010

## In Several Colors

Thanks to everyone who attended the opening reception for *In Several Colors* - artists Allison Syvertsen and Stephanie Rogers had a great crowd throughout the evening.



Stephanie Rogers and Allison Syvertsen

Color, light and the transformative power of painting unite the work by both artists. The city, with its strange juxtapositions and moments of surprising color or texture, provides Syvertsen her inspiration. Rogers' use of color is more internally inspired; starting with a particular rhythm, she creates a symphonic combination of form and emotion.

If you haven't seen the show yet, there's still time! Meet the artists on October 3, 1-4pm. The exhibition is on view through Friday, October 15.

## MARK YOUR CALENDAR

Sunday, October 3  
1 - 4 pm

Meet the Artists Allison Syvertsen & Stephanie Rogers  
Gallery Talk at 2 pm



**IN SEVERAL COLORS**

Friday, October 22  
5 - 9 pm

Opening Reception  
*Natural Touch:*  
Drawings by Michael Moore and Michael Rossman  
Continues thru November 27

## Mosaic Fundraiser

Plans for the expansion into the building next door continue to progress. As part of the design of the new front entrance, a 10-foot high ceramic tile mosaic will greet visitors in the vestibule. Comprising over 700 tiles of various sizes, we would like the composition to be designed by friends of the gallery. Starting at just \$5, you can help us create this special work. Ceramic tiles and glaze are available for painting at the gallery; a randomly selected number will position your tile in the overall composition. Funds raised will contribute toward the installation of the new entrance and display windows.



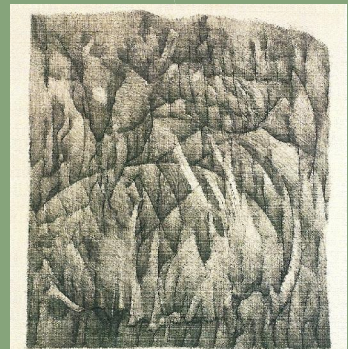
## Natural Touch:

### Drawings by Michael Moore and Michael Rossman

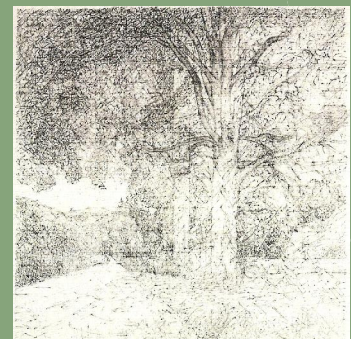
We're pleased to have Guest Curator Emily Brown present our upcoming exhibition *Natural Touch* featuring abstract drawings by Philadelphia artists Michael Moore and Michael Rossman.

Familiar with both artists' work, Ms. Brown brings together two who "thoughtfully explore and build complex fields by means of dots and lines". For both, nature is the source.

Moore has been a member of the Graduate Faculty at PAFA since 1992; Rossman is a Professor at the University of the Arts. Both have exhibited in galleries and museums throughout the East Coast.



Moore, *Fire and Stone*, india ink on Arches



Rossman, *Rheims Valley*, graphite on Arches buff

## Decorative Artists' Spotlight

### Peace by Piece Fair Trade

Handmade by artisans in Nicaragua, these beautiful pieces of pottery feature intricately carved designs. While some vases honor the flora and fauna so prevalent in their lives, others showcase the technical skill involved in their progressive geometric patterns. Each is proudly signed by the artist.



### J. Devlin Glass Art

Named for her grandfather whose house was filled with stained glass, Kathy Gustafson's studio first produced leaded glass windows and lamps for churches and homes throughout the Midwest. Today she offers a unique line of lead-free picture frames. Faceted, embossed and stained glass are all incorporated, providing a variety of designs from which to choose.



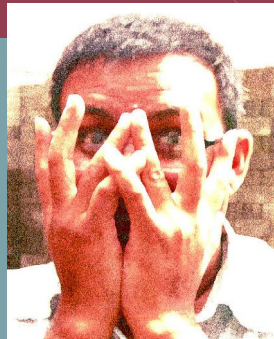
## Artists in the News

Congratulations to artists Binod Shrestha and Anthony Ciambella who each recently received grants to pursue their artistic endeavors.

New York's Art Matters awarded Shrestha a grant for travel to Nepal, the artist's birthplace, for interviews and video/photo documentation exploring body-politics, violence, memory and identity. Additionally, CFEVA has

awarded Shrestha an alumni travel grant and solo exhibition for 2011. Shrestha's next exhibition at Cerulean Arts is scheduled for early 2012.

Ciambella received a 2010 Faculty Development Grant from PAFA where he is an adjunct faculty member. Known for his intriguing reliquary sculptures and paintings, the grant will allow Ciambella, a multi-media artist, to produce a body of digital prints and videos to be exhibited at Cerulean Arts in fall 2011.



Binod Shrestha



Anthony Ciambella

## Dog Days of Summer

As many of you know, our summer started out on a sad note with the passing of our sweet pug Sai-Long. After 14 ½ years we were trying to cope without the sound of his or his brother Ginseng's little paws running throughout our home and gallery.



Two weeks later, we found Starla who, unbelievably, had been tied up in the vacant lot next to the gallery. While fostering her, to our great surprise, the gallery became a nursery when she gave birth to three little pups. We're so happy to have played a little part in raising them. Many thanks to all who helped and to the great adoptive families of Starla and the puppies!

Sunday, November 7

1 - 4 pm

Meet the Artists Michael Moore and Michael Rossman and Guest-Curator Emily Brown Gallery Talk at 2 pm

Thursday, November 25

Closed for Thanksgiving

Friday, December 3

5 - 9 pm

Opening Reception  
Richard Estell



Sunday, December 5

1 - 5 pm

Enjoy an afternoon of cheer at our 5th Annual Holiday Party

## Cerulean Arts

Cultivating an appreciation for art by holding exhibitions, offering unique decorative and fine art for sale and providing art instruction for personal fulfillment.

### **Gallery Hours:**

Wednesday - Friday 10 am - 6pm

Saturday & Sunday 12 pm - 6 pm

**1355 RIDGE AVENUE**

**267-514-8647**

